



Customer: Herbal Pharm RX
Customer Sample ID: D8 Cart
Laboratory Number: 20K0423-01



Cannabinoid Profile

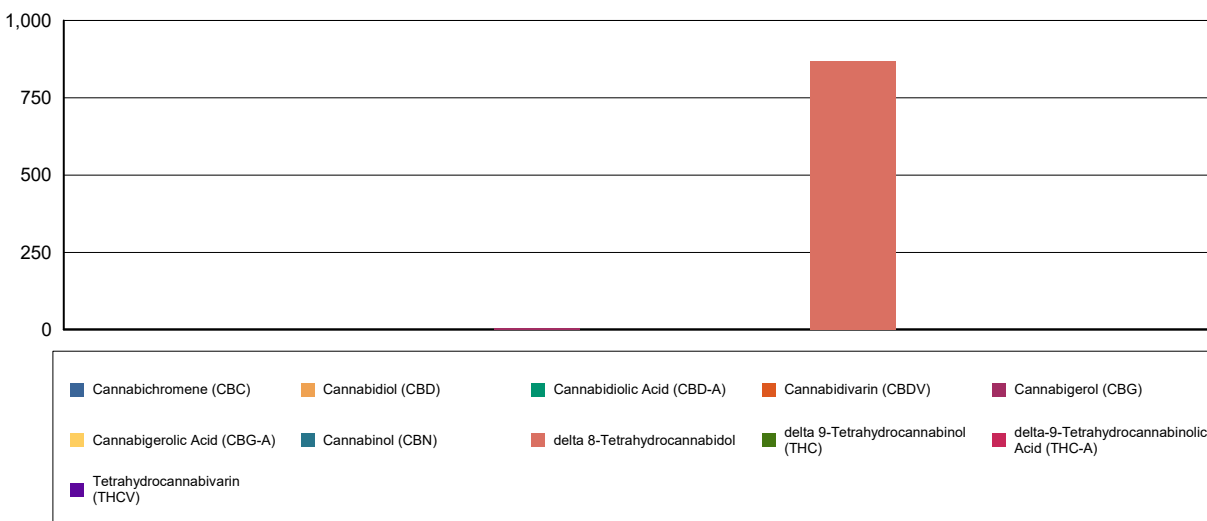
Extraction Technician: DF
Analytical Chemist: SH

Extraction Date(s)	Analysis Date(s)
11/20/2020	11/21/2020

Cannabinoids (HPLC)		Results	
	LOD (mg/g)	%	mg/g
Cannabidiol (CBD)	<0.60		
Cannabidiolic Acid (CBD-A)	<0.60		
Cannabigerolic Acid (CBG-A)	<0.60		
Cannabigerol (CBG)		0.49	4.85
Cannabidiol (CBD)	<0.60		
Tetrahydrocannabivarin (THCV)	<0.60		
Cannabinol (CBN)	<0.60		
delta 9-Tetrahydrocannabinol (THC)	<0.60		
delta 8-Tetrahydrocannabinol		86.94	869
Cannabichromene (CBC)	<0.60		
delta-9-Tetrahydrocannabinolic Acid (THC-A)	<0.60		
Cannabinoids Total		%	mg/g
Max Active THC		0.00	0.00
Max Active CBD		0.00	0.00
T.Active Cannabinoids		0.49	4.85
Total Cannabinoids		87.40	874.00

Following USDA guidelines on uncertainty, Altitude Consulting's uncertainty are calculated for CBDa and CBD at +/- 4%. The uncertainty for THCa and THC are +/- 5%. This implies the range for a 10% value of CBD to be 9.6-10.4%. The uncertainty range for a 0.30% value of THC would be 0.28-0.32%. The measurement uncertainty is calculated using a coverage factor of 2.

Cannabinoid (mg/g)



Reporting Limits will vary based on sample extraction weight used for the analysis.
 Altitude Consulting, LLC utilizes NIST traceable Reference Standards and Certified Reference Material to calibrate analytical instruments along with proven analytical methods. The methods are applied in the most ethical manner following good laboratory practice guidelines. The results of this report are based solely on the sample submitted and cannot be reproduced.



Customer: Herbal Pharm RX
 Customer Sample ID: D8 Syringe
 Laboratory Number: 20K0423-02



Cannabinoid Profile

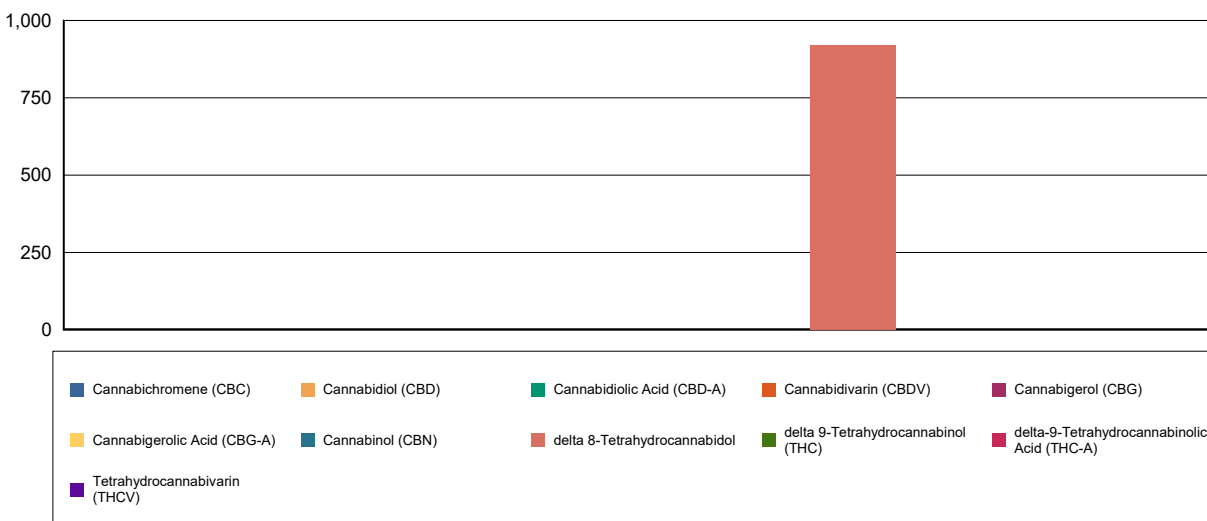
Extraction Technician: DF
 Analytical Chemist: SH

Extraction Date(s)	Analysis Date(s)
11/20/2020	11/21/2020

Cannabinoids (HPLC)		Results	
	LOD (mg/g)	%	mg/g
Cannabidiarin (CBDV)	<0.60		
Cannabidiolic Acid (CBD-A)	<0.60		
Cannabigerolic Acid (CBG-A)	<0.60		
Cannabigerol (CBG)	<0.60		
Cannabidiol (CBD)	<0.60		
Tetrahydrocannabivarin (THCV)	<0.60		
Cannabinol (CBN)	<0.60		
delta 9-Tetrahydrocannabinol (THC)	<0.60		
delta 8-Tetrahydrocannabidol		92.10	921
Cannabichromene (CBC)	<0.60		
delta-9-Tetrahydrocannabinolic Acid (THC-A)	<0.60		
Cannabinoids Total		%	mg/g
Max Active THC		0.00	0.00
Max Active CBD		0.00	0.00
T.Active Cannabinoids		0.00	0.00
Total Cannabinoids		92.10	921.00

Following USDA guidelines on uncertainty, Altitude Consulting's uncertainty are calculated for CBDa and CBD at +/- 4%. The uncertainty for THCa and THC are +/- 5%. This implies the range for a 10% value of CBD to be 9.6-10.4%. The uncertainty range for a 0.30% value of THC would be 0.28-0.32%. The measurement uncertainty is calculated using a coverage factor of 2.

Cannabinoid (mg/g)



Reporting Limits will vary based on sample extraction weight used for the analysis.

Altitude Consulting, LLC utilizes NIST traceable Reference Standards and Certified Reference Material to calibrate analytical instruments along with proven analytical methods. The methods are applied in the most ethical manner following good laboratory practice guidelines. The results of this report are based solely on the sample submitted and cannot be reproduced.



Customer: Herbal Pharm RX
Customer Sample ID: D8 Disposable
Laboratory Number: 20K0423-03



Cannabinoid Profile

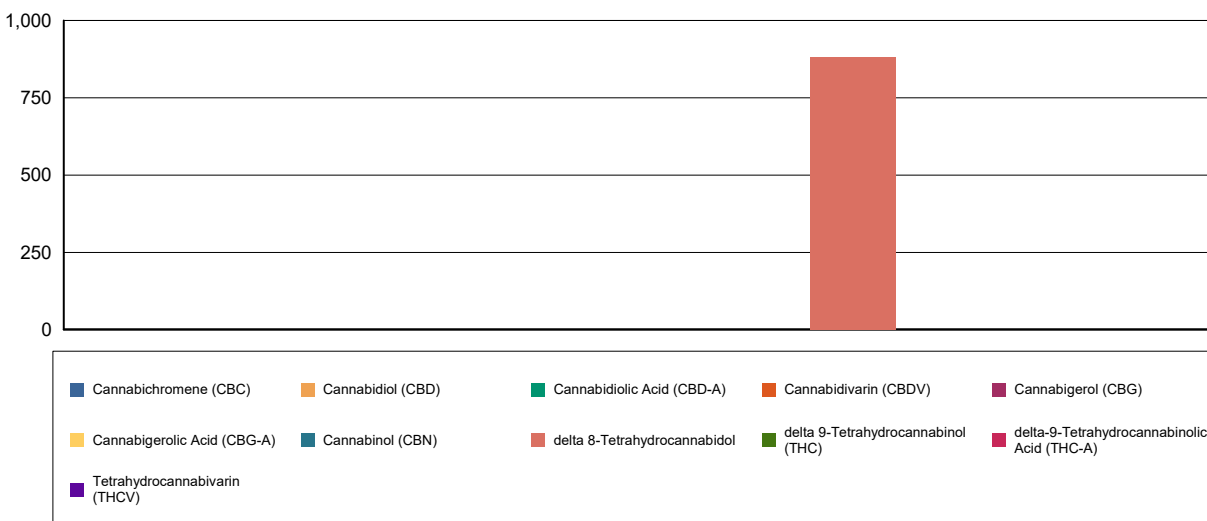
Extraction Technician: DF
Analytical Chemist: SH

Extraction Date(s)	Analysis Date(s)
11/20/2020	11/21/2020

Cannabinoids (HPLC)		Results	
	LOD (mg/g)	%	mg/g
Cannabidivarin (CBDV)	<0.60		
Cannabidiolic Acid (CBD-A)	<0.60		
Cannabigerolic Acid (CBG-A)	<0.60		
Cannabigerol (CBG)	<0.60		
Cannabidiol (CBD)	<0.60		
Tetrahydrocannabivarin (THCV)	<0.60		
Cannabinol (CBN)	<0.60		
delta 9-Tetrahydrocannabinol (THC)	<0.60		
delta 8-Tetrahydrocannabidol		88.35	883
Cannabichromene (CBC)	<0.60		
delta-9-Tetrahydrocannabinolic Acid (THC-A)	<0.60		
Cannabinoids Total		%	mg/g
Max Active THC		0.00	0.00
Max Active CBD		0.00	0.00
T.Active Cannabinoids		0.00	0.00
Total Cannabinoids		88.30	883.00

Following USDA guidelines on uncertainty, Altitude Consulting's uncertainty are calculated for CBDa and CBD at +/- 4%. The uncertainty for THCa and THC are +/- 5%. This implies the range for a 10% value of CBD to be 9.6-10.4%. The uncertainty range for a 0.30% value of THC would be 0.28-0.32%. The measurement uncertainty is calculated using a coverage factor of 2.

Cannabinoid (mg/g)



Reporting Limits will vary based on sample extraction weight used for the analysis.

Altitude Consulting, LLC utilizes NIST traceable Reference Standards and Certified Reference Material to calibrate analytical instruments along with proven analytical methods. The methods are applied in the most ethical manner following good laboratory practice guidelines. The results of this report are based solely on the sample submitted and cannot be reproduced.



Customer: Herbal Pharm RX
Customer Sample ID: D8 1K Tincture
Laboratory Number: 20K0423-04

Density: 0.950



Cannabinoid Profile

Extraction Technician: DF
Analytical Chemist: SH

Extraction Date(s)	Analysis Date(s)
11/20/2020	11/21/2020

Cannabinoids (HPLC)		Results	
	LOD (mg/mL)	%	mg/mL
Cannabidiarin (CBDV)	<0.20		
Cannabidiolic Acid (CBD-A)	<0.20		
Cannabigerolic Acid (CBG-A)	<0.20		
Cannabigerol (CBG)	<0.20		
Cannabidiol (CBD)	<0.20		
Tetrahydrocannabivarin (THCV)	<0.20		
Cannabinol (CBN)	<0.20		
delta 9-Tetrahydrocannabinol (THC)	<0.20		
delta 8-Tetrahydrocannabidol		3.88	38.8
Cannabichromene (CBC)	<0.20		
delta-9-Tetrahydrocannabinolic Acid (THC-A)	<0.20		
Cannabinoids Total		%	mg/mL
Max Active THC		0.00	0.00
Max Active CBD		0.00	0.00
T.Active Cannabinoids		0.00	0.00
Total Cannabinoids		3.88	38.80

Following USDA guidelines on uncertainty, Altitude Consulting's uncertainty are calculated for CBDa and CBD at +/- 4%. The uncertainty for THCa and THC are +/- 5%. This implies the range for a 10% value of CBD to be 9.6-10.4%. The uncertainty range for a 0.30% value of THC would be 0.28-0.32%. The measurement uncertainty is calculated using a coverage factor of 2.

Cannabinoid (mg/mL)



■ Cannabichromene (CBC)	■ Cannabidiol (CBD)	■ Cannabidiolic Acid (CBD-A)	■ Cannabidiarin (CBDV)	■ Cannabigerol (CBG)
■ Cannabigerolic Acid (CBG-A)	■ Cannabinol (CBN)	■ delta 8-Tetrahydrocannabidol	■ delta 9-Tetrahydrocannabinol (THC)	■ delta-9-Tetrahydrocannabinolic Acid (THC-A)
■ Tetrahydrocannabivarin (THCV)				

Reporting Limits will vary based on sample extraction weight used for the analysis.

Altitude Consulting, LLC utilizes NIST traceable Reference Standards and Certified Reference Material to calibrate analytical instruments along with proven analytical methods. The methods are applied in the most ethical manner following good laboratory practice guidelines. The results of this report are based solely on the sample submitted and cannot be reproduced.



Customer: Herbal Pharm RX
Customer Sample ID: D8 2.5K Tincture
Laboratory Number: 20K0423-05

Density: 0.950



Cannabinoid Profile

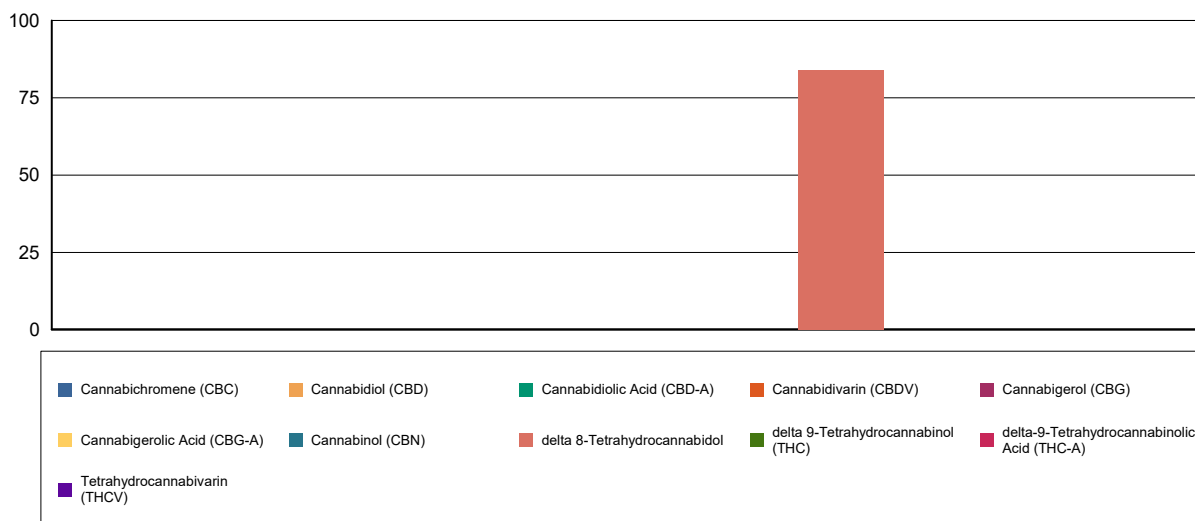
Extraction Technician: DF
Analytical Chemist: SH

Extraction Date(s)	Analysis Date(s)
11/20/2020	11/21/2020

Cannabinoids (HPLC)		Results	
	LOD (mg/mL)	%	mg/mL
Cannabidiarin (CBDV)	<0.20		
Cannabidiolic Acid (CBD-A)	<0.20		
Cannabigerolic Acid (CBG-A)	<0.20		
Cannabigerol (CBG)	<0.20		
Cannabidiol (CBD)	<0.20		
Tetrahydrocannabivarin (THCV)	<0.20		
Cannabinol (CBN)	<0.20		
delta 9-Tetrahydrocannabinol (THC)	<0.20		
delta 8-Tetrahydrocannabidol		8.39	83.9
Cannabichromene (CBC)	<0.20		
delta-9-Tetrahydrocannabinolic Acid (THC-A)	<0.20		
Cannabinoids Total		%	mg/mL
Max Active THC		0.00	0.00
Max Active CBD		0.00	0.00
T.Active Cannabinoids		0.00	0.00
Total Cannabinoids		8.39	83.90

Following USDA guidelines on uncertainty, Altitude Consulting's uncertainty are calculated for CBDa and CBD at +/- 4%. The uncertainty for THCa and THC are +/- 5%. This implies the range for a 10% value of CBD to be 9.6-10.4%. The uncertainty range for a 0.30% value of THC would be 0.28-0.32%. The measurement uncertainty is calculated using a coverage factor of 2.

Cannabinoid (mg/mL)



Reporting Limits will vary based on sample extraction weight used for the analysis.

Altitude Consulting, LLC utilizes NIST traceable Reference Standards and Certified Reference Material to calibrate analytical instruments along with proven analytical methods. The methods are applied in the most ethical manner following good laboratory practice guidelines. The results of this report are based solely on the sample submitted and cannot be reproduced.



Customer: Herbal Pharm RX
Customer Sample ID: D8 5K Tincture
Laboratory Number: 20K0423-06

Density: 1.019



Cannabinoid Profile

Extraction Technician: DF
Analytical Chemist: SH

Extraction Date(s)	Analysis Date(s)
11/20/2020	11/21/2020

Cannabinoids (HPLC)		Results	
	LOD (mg/mL)	%	mg/mL
Cannabidiol (CBD)	<0.20		
Cannabidiolic Acid (CBD-A)	<0.20		
Cannabigerolic Acid (CBG-A)	<0.20		
Cannabigerol (CBG)	<0.20		
Tetrahydrocannabivarin (THCV)	<0.20		
Cannabinol (CBN)	<0.20		
delta 9-Tetrahydrocannabinol (THC)	<0.20		
delta 8-Tetrahydrocannabidol		19.51	195
Cannabichromene (CBC)	<0.20		
delta-9-Tetrahydrocannabinolic Acid (THC-A)	<0.20		
Cannabinoids Total		%	mg/mL
Max Active THC		0.00	0.00
Max Active CBD		0.00	0.00
T.Active Cannabinoids		0.00	0.00
Total Cannabinoids		19.50	195.00

Following USDA guidelines on uncertainty, Altitude Consulting's uncertainty are calculated for CBDa and CBD at +/- 4%. The uncertainty for THCa and THC are +/- 5%. This implies the range for a 10% value of CBD to be 9.6-10.4%. The uncertainty range for a 0.30% value of THC would be 0.28-0.32%. The measurement uncertainty is calculated using a coverage factor of 2.

Cannabinoid (mg/mL)



■ Cannabichromene (CBC)	■ Cannabidiol (CBD)	■ Cannabidiolic Acid (CBD-A)	■ Cannabidiol (CBD)	■ Cannabigerol (CBG)
■ Cannabigerolic Acid (CBG-A)	■ Cannabinol (CBN)	■ delta 8-Tetrahydrocannabidol	■ delta 9-Tetrahydrocannabinol (THC)	■ delta-9-Tetrahydrocannabinolic Acid (THC-A)
■ Tetrahydrocannabivarin (THCV)				

Reporting Limits will vary based on sample extraction weight used for the analysis.

Altitude Consulting, LLC utilizes NIST traceable Reference Standards and Certified Reference Material to calibrate analytical instruments along with proven analytical methods. The methods are applied in the most ethical manner following good laboratory practice guidelines. The results of this report are based solely on the sample submitted and cannot be reproduced.



Customer: Herbal Pharm RX
Customer Sample ID: D8 10K Tincture
Laboratory Number: 20K0423-07

Density: 1.019



Cannabinoid Profile

Extraction Technician: DF
Analytical Chemist: SH

Extraction Date(s)	Analysis Date(s)
11/20/2020	11/21/2020

Cannabinoids (HPLC)		Results	
	LOD (mg/mL)	%	mg/mL
Cannabidiol (CBD)	<0.20		
Cannabidiolic Acid (CBD-A)	<0.20		
Cannabigerolic Acid (CBG-A)	<0.20		
Cannabigerol (CBG)	<0.20		
Tetrahydrocannabivarin (THCV)	<0.20		
Cannabinol (CBN)	<0.20		
delta 9-Tetrahydrocannabinol (THC)	<0.20		
delta 8-Tetrahydrocannabidol		36.83	368
Cannabichromene (CBC)	<0.20		
delta-9-Tetrahydrocannabinolic Acid (THC-A)	<0.20		
Cannabinoids Total		%	mg/mL
Max Active THC		0.00	0.00
Max Active CBD		0.00	0.00
T.Active Cannabinoids		0.00	0.00
Total Cannabinoids		36.80	368.00

Following USDA guidelines on uncertainty, Altitude Consulting's uncertainty are calculated for CBDa and CBD at +/- 4%. The uncertainty for THCa and THC are +/- 5%. This implies the range for a 10% value of CBD to be 9.6-10.4%. The uncertainty range for a 0.30% value of THC would be 0.28-0.32%. The measurement uncertainty is calculated using a coverage factor of 2.

Cannabinoid (mg/mL)



■ Cannabichromene (CBC)	■ Cannabidiol (CBD)	■ Cannabidiolic Acid (CBD-A)	■ Cannabidiol (CBD)	■ Cannabigerol (CBG)
■ Cannabigerolic Acid (CBG-A)	■ Cannabinol (CBN)	■ delta 8-Tetrahydrocannabidol	■ delta 9-Tetrahydrocannabinol (THC)	■ delta-9-Tetrahydrocannabinolic Acid (THC-A)
■ Tetrahydrocannabivarin (THCV)				

Reporting Limits will vary based on sample extraction weight used for the analysis.

Altitude Consulting, LLC utilizes NIST traceable Reference Standards and Certified Reference Material to calibrate analytical instruments along with proven analytical methods. The methods are applied in the most ethical manner following good laboratory practice guidelines. The results of this report are based solely on the sample submitted and cannot be reproduced.



Customer: Herbal Pharm RX
Customer Sample ID: D8 Full Spec Dab
Laboratory Number: 20K0423-08



Cannabinoid Profile

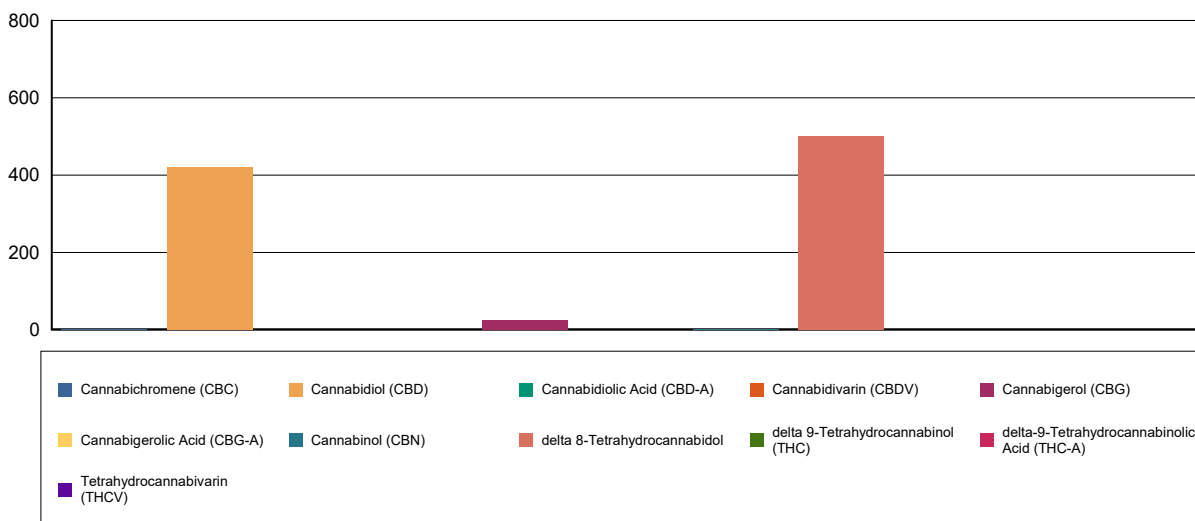
Extraction Technician: DF
Analytical Chemist: SH

Extraction Date(s)	Analysis Date(s)
11/20/2020	11/21/2020

Cannabinoids (HPLC)	Results		
	LOD (mg/g)	%	mg/g
Cannabidiarin (CBDV)	<0.70		
Cannabidiolic Acid (CBD-A)	<0.70		
Cannabigerolic Acid (CBG-A)	<0.70		
Cannabigerol (CBG)		2.48	24.8
Cannabidiol (CBD)		42.10	421
Tetrahydrocannabivarin (THCV)	<0.70		
Cannabinol (CBN)		0.20	2.00
delta 9-Tetrahydrocannabinol (THC)	<0.70		
delta 8-Tetrahydrocannabidol		50.07	501
Cannabichromene (CBC)		0.28	2.76
delta-9-Tetrahydrocannabinolic Acid (THC-A)	<0.70		
Cannabinoids Total		%	mg/g
Max Active THC		0.00	0.00
Max Active CBD		42.10	421.00
T.Active Cannabinoids		45.10	451.00
Total Cannabinoids		95.10	951.00

Following USDA guidelines on uncertainty, Altitude Consulting's uncertainty are calculated for CBDa and CBD at +/- 4%. The uncertainty for THCa and THC are +/- 5%. This implies the range for a 10% value of CBD to be 9.6-10.4%. The uncertainty range for a 0.30% value of THC would be 0.28-0.32%. The measurement uncertainty is calculated using a coverage factor of 2.

Cannabinoid (mg/g)



Reporting Limits will vary based on sample extraction weight used for the analysis.

Altitude Consulting, LLC utilizes NIST traceable Reference Standards and Certified Reference Material to calibrate analytical instruments along with proven analytical methods. The methods are applied in the most ethical manner following good laboratory practice guidelines. The results of this report are based solely on the sample submitted and cannot be reproduced.



Customer: Herbal Pharm RX
 Customer Sample ID: Dog Shampoo
 Laboratory Number: 20K0423-09



Cannabinoid Profile

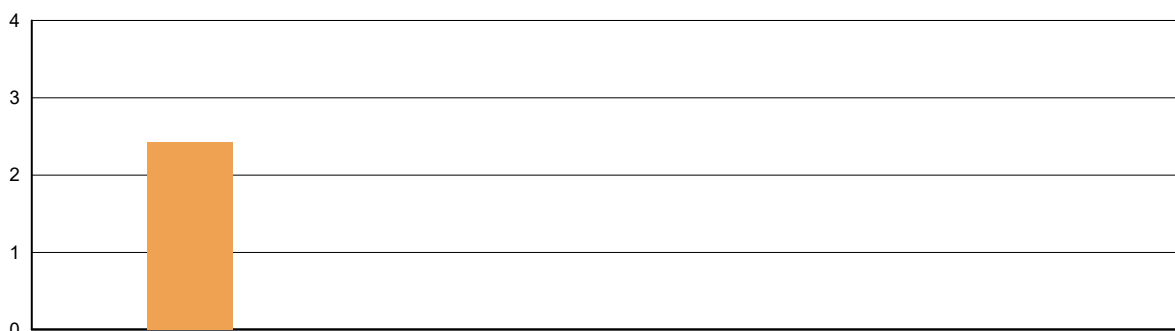
Extraction Technician: DF
 Analytical Chemist: SH

Extraction Date(s)	Analysis Date(s)
11/20/2020	11/21/2020

Cannabinoids (HPLC)		Results	
	LOD (mg/g)	%	mg/g
Cannabidiol (CBD)	<0.080	0.24	2.43
Cannabidiol (CBD)	<0.080		
Cannabidiolic Acid (CBD-A)	<0.080		
Cannabigerolic Acid (CBG-A)	<0.080		
Cannabigerol (CBG)	<0.080		
Cannabidivarin (CBDV)	<0.080		
Tetrahydrocannabivarin (THCV)	<0.080		
Cannabinol (CBN)	<0.080		
delta 9-Tetrahydrocannabinol (THC)	<0.080		
delta 8-Tetrahydrocannabidol	<0.080		
Cannabichromene (CBC)	<0.080		
delta-9-Tetrahydrocannabinolic Acid (THC-A)	<0.080		
Cannabinoids Total		%	mg/g
Max Active THC		0.00	0.00
Max Active CBD		0.24	2.43
T.Active Cannabinoids		0.24	2.43
Total Cannabinoids		0.24	2.43

Following USDA guidelines on uncertainty, Altitude Consulting's uncertainty are calculated for CBDa and CBD at +/- 4%. The uncertainty for THCa and THC are +/- 5%. This implies the range for a 10% value of CBD to be 9.6-10.4%. The uncertainty range for a 0.30% value of THC would be 0.28-0.32%. The measurement uncertainty is calculated using a coverage factor of 2.

Cannabinoid (mg/g)



■ Cannabichromene (CBC)	■ Cannabidiol (CBD)	■ Cannabidiolic Acid (CBD-A)	■ Cannabidivarin (CBDV)	■ Cannabigerol (CBG)
■ Cannabigerolic Acid (CBG-A)	■ Cannabinol (CBN)	■ delta 8-Tetrahydrocannabidol	■ delta 9-Tetrahydrocannabinol (THC)	■ delta-9-Tetrahydrocannabinolic Acid (THC-A)
■ Tetrahydrocannabivarin (THCV)				

Reporting Limits will vary based on sample extraction weight used for the analysis.

Altitude Consulting, LLC utilizes NIST traceable Reference Standards and Certified Reference Material to calibrate analytical instruments along with proven analytical methods. The methods are applied in the most ethical manner following good laboratory practice guidelines. The results of this report are based solely on the sample submitted and cannot be reproduced.