

# Potency Report



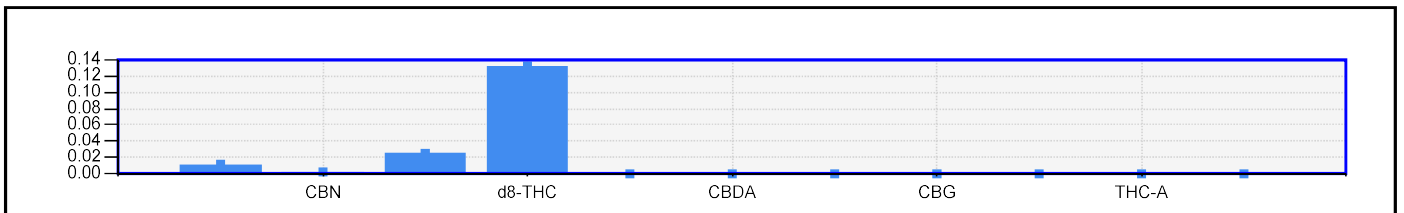
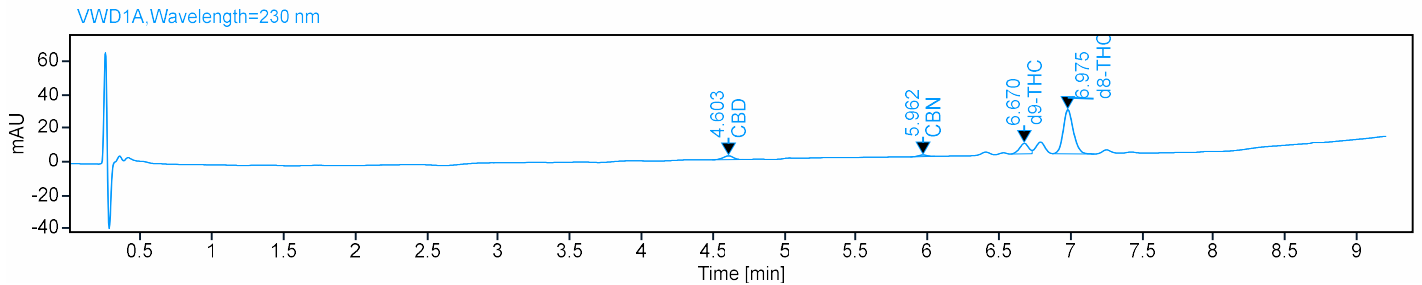
**Batch ID:** 009504  
**Sample Description:** Sanrida Inc. 9-22220  
 D8-THC Infused Sour Pineapple (Vidal)  
 15mg/gummy, FR# 18-228, FW: 6.28g  
 Retest

Name	Concentration [mg/g]	% Amount
CBGA	0.0000	0.00
THC-A	0.0000	0.00
THCV	0.0000	0.00
CBG	0.0000	0.00
CBC	0.0000	0.00
CBDA	0.0000	0.00
CBDV	0.0000	0.00
CBD	0.1155	0.01
CBN	0.0225*	0.00
d9-THC	0.2519	0.03
d8-THC	2.4812	0.25

Total THC [mg/g]	Total THC [%]	Total CBD [mg/g]	Total CBD [%]
0.25	0.03	0.12	0.01

**Comments:**

**Total Delta 8: 2.48mg/g  
 15.6mg/gummy**



\* Cannabinoids with on-column values below LOQ will not be calculated into the "Total Cannabinoids" value.